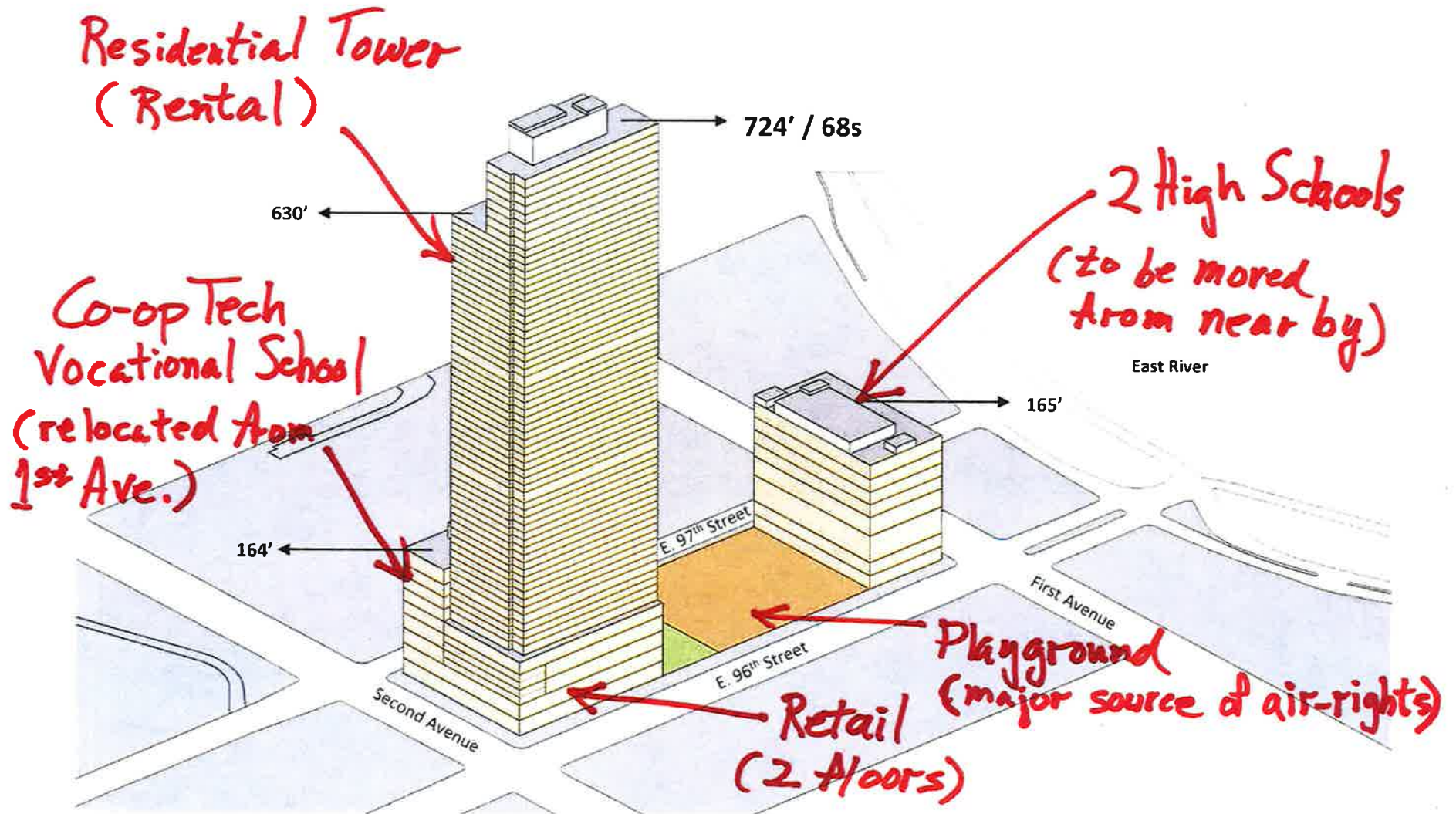


ECF East 96th Street Project

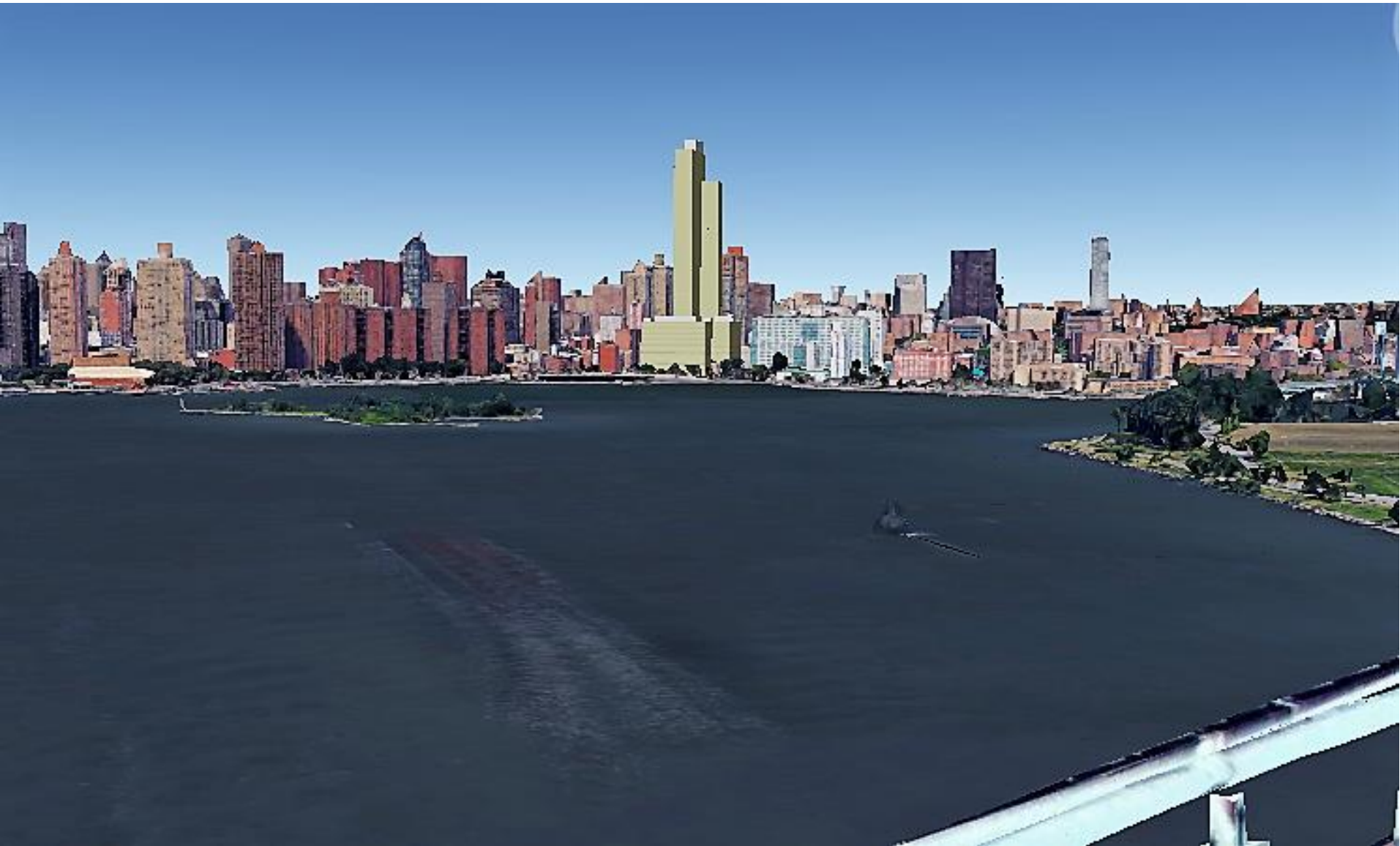
Project as proposed by ECF

Looking Northeast



Submitted by: Carnegie Hill Neighbors 7/17/2017

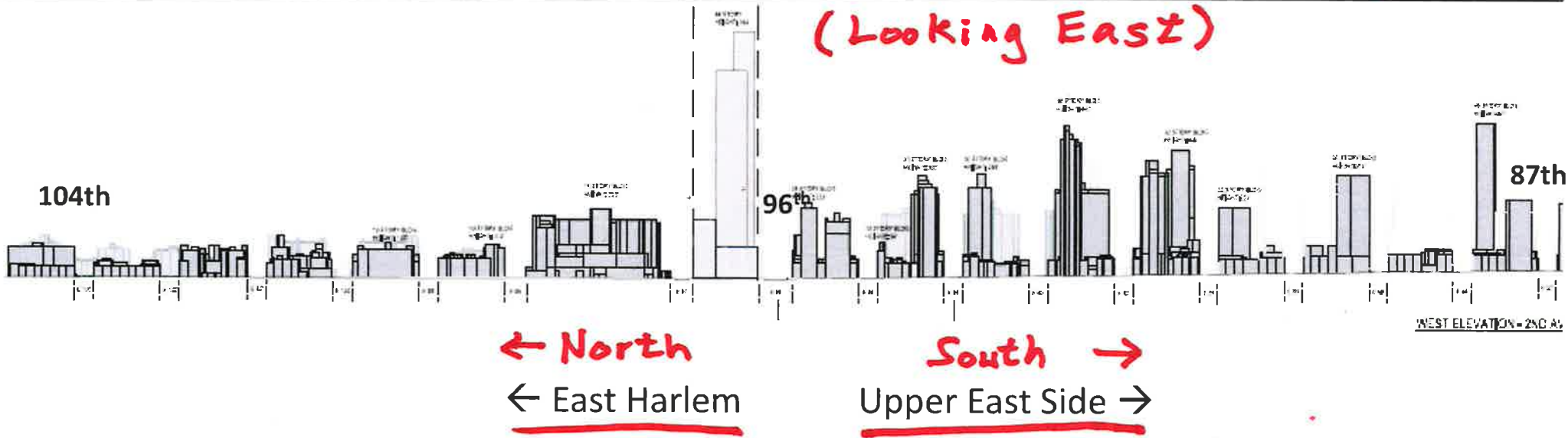
View of project as proposed from Triboro Bridge



Second Avenue elevation with project from 104th to 87th

2nd Avenue Streetscape

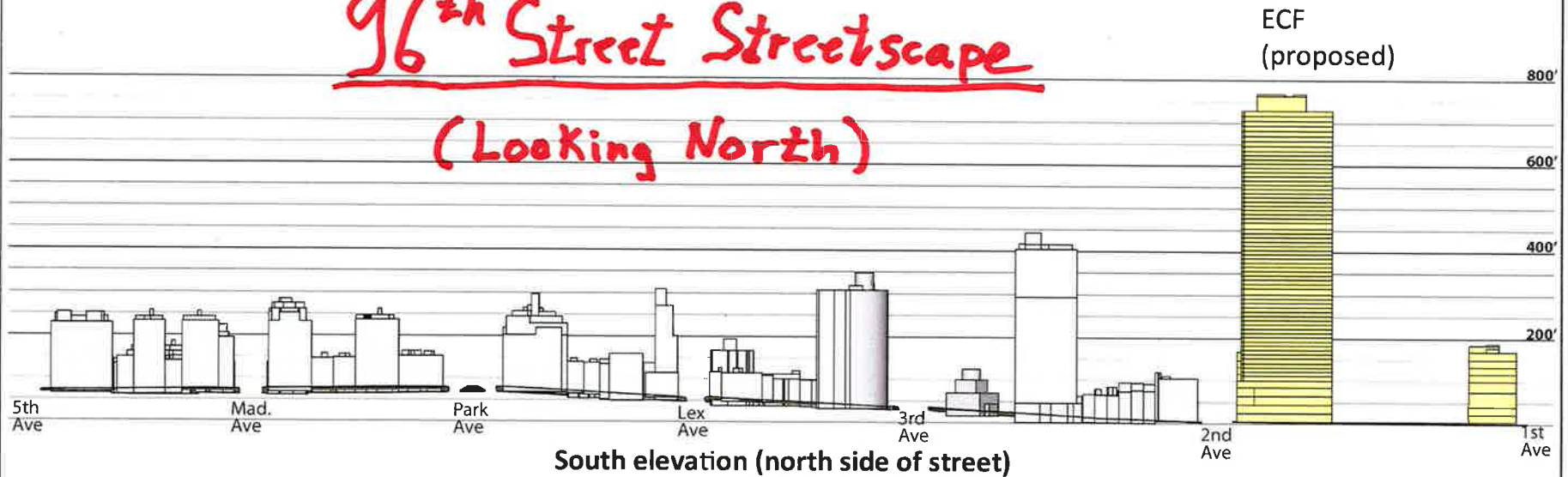
(Looking East)



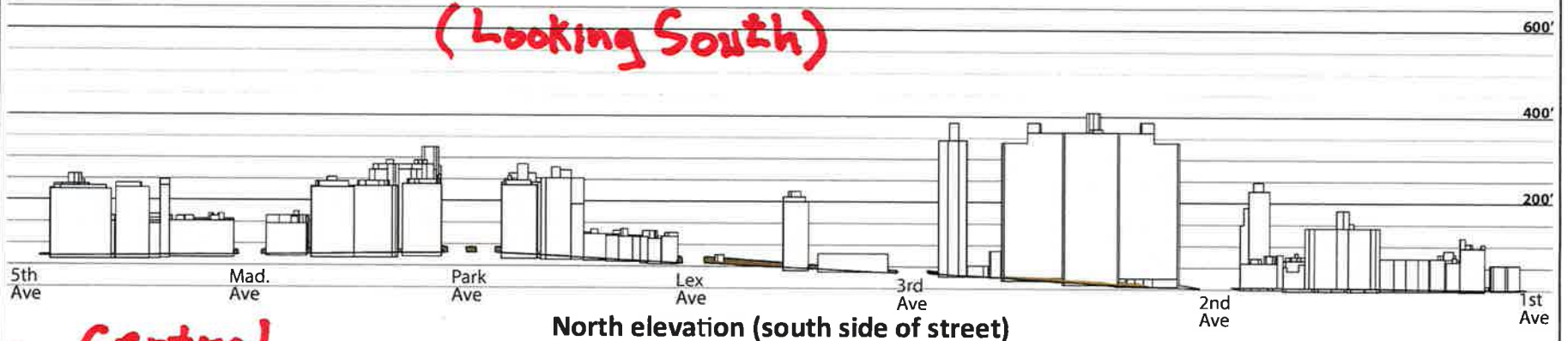
In Massing and Height
the Tower Dominates the Skyline

96th Street Elevations from Fifth Avenue to First Avenue

96th Street Streetscape (Looking North)



(Looking South)



← Central Park

East River →

Each gridline is 50 feet measured from First Avenue curb elevation
North elevation is mirror image of actual so that opposing sides of blocks are aligned.